

# GALLERY INSIGHT

Insight Newsletter is a platform for building a community around art, design, creativity & inspiration

**AUTUMN  
NEWSLETTER 2009**

1st edition

## WELCOME!

to our very first Newsletter!

Welcome everyone to Harrison's Gallery first issue of 'Gallery Insight'!

The inspiration behind this newsletter is so we can inform you, our customers, on everything that has been happening and what is going to be happening here in the near future. Gallery Insight will be a quarterly newsletter, which will incorporate our ArtBuzz schedule for the following term- so this issue contains ArtBuzz Term 2. You will also find Gallery Insight packed with tips, incentives, and ideas for framing, art supplies, restoration, art gifts and much more.

### Managers Word

We have had a very busy March here at Harrison's Gallery. Firstly, we signed up two of New Zealand's finest landscape artists- Mark Cross and Tim Wilson. We will be representing Mark exclusively in New Zealand (please see biography on Mark in the 'Gallery' section) and Tim in the North Island. We successfully held 'Tim Wilson 2009 Artworks Exhibition' during March- and what a hit it was! We held the grandest of opening nights with champagne, diamonds and of course thirteen of the most impressive oil landscape paintings that has ever graced Harrison's walls! If you were lucky enough to attend Tim Wilson's preview night you can view photos of the evening on our web site at: [www.harrisonsgallery.co.nz](http://www.harrisonsgallery.co.nz). It just goes to show that Tauranga's art scene is ready for top names like Tim



Majestic Te Anau, by Tim Wilson

The public was in awe of the quality and pure magnificence of Tim's artworks. Followin the opening night we were very lucky to have Tim in the Gallery on the Saturday painting one of his exquisite canvases in front of the public- this artwork is now in the Gallery for sale and is my all time favourite Tim Wilson! We received so much interest in Tim's painting skills that we have decided to hold three, two day

workshops, tutored by Tim at the end of April- see the ArtBuzz schedule for more information on these workshops.

We are also very excited to announce that in August 2009, Harrison's Gallery will be launching the Golden range of acrylic paints and mediums. This will complete our range of 'artist quality' acrylic paints available to our customers. The Golden range is one of the most reputable acrylic brands in the world. We will be holding free information workshops for the public, focusing on Golden once we have the range in stock- so watch this space! I hope you all enjoy the first issue of Gallery Insight and I look forward to seeing you in the Gallery soon.

*Durrelle Green*  
Gallery Manager

## UPCOMING EVENTS

• **16th – 30th May** 'Images of Europe' Exhibition.

This exhibition will feature over 30 original artworks painted by reputable European artists from the sixteenth to the twenty first century. Exhibition will be held in association with the Fine Art Society New Zealand Ltd. Preview night will be by invitation only on April 15th. If you wish to attend this exclusive evening or you wish to receive a catalogue of artworks, please phone Harrison's Gallery on 07 578 9322.

• **26th June – 18th July**, Exhibition of Antony Warnes (Tauranga), Beverly Hollister-Jones (Tauranga) and Colin Unkovich (Waipu, Northland). Preview night will be by invitation only on April 14th. If you wish to attend this exclusive evening or you wish to receive a catalogue of their artworks, please phone Harrison's Gallery on 07 578 9322.

• **Saturday 2nd May**, Art Supplies Sale. 10am – 2pm, **one day only**.

• **ArtBuzz Term 2, 4th May – 26th June**, see class schedule at rear of newsletter.

### Choosing The Right Easel

Why use an easel?

Whether you are a beginner, a hobbyist or an experienced professional, the right easel makes all the difference to your artwork as well as your back! Easels promote correct posture and good working habits, they also make it easy for you to step back and see how your painting is progressing and help keep your artwork composition and design in better perspective.

perspective.

Now that we have established why you should use an easel let me give you a few tips on what easels are available;

- **Styles** - Basically there are only five styles of easels; the Table Easel, the Tripod Easel, the Portable/Box Easel, the Lyre (A-frame) Easel, and the Studio (H-frame) Easel.

- **Portable Easels**- Some easels are portable; they can be moved around the studio, allowing you to work in the best

natural light. This also gives you the option of moving your work space to another room, or even outside, and to pack it away after your session has ended.

- **Table Top Easels**- table top art easels are great if space is an issue because they don't take up floor space and can be folded up. They also allow you to sit at your dining room table...

...cont. on page 4.

# HARRISONS GALLERY

[www.harrisonsgallery.co.nz](http://www.harrisonsgallery.co.nz)

Bay of Plenty's true fine art gallery  
106, Eleventh Avenue  
Tauranga

15% off all new custom framing orders until the end of May 2009 on presentation of this Newsletter

## Gallery News - Mark Cross

New Zealand born artist Mark Cross is considered one of the South Pacific's leading contemporary realist painters. Based in the central Polynesian island of Niue, Mark Cross works are sought after by collectors from the Pacific Rim and further a field. Employing landscapes often with people in them, Mark's artworks are well known for imparting a social message that speaks of mankind's delinquent abuse of his home the Earth. They speak of the world but are intrinsically Pacific. Mark's stunning paintings are available through fine art galleries in the United States, Niue and exclusively in New Zealand at Harrison's Gallery.

If you are interested in viewing Mark's beautiful artworks come into Harrison's Gallery or view on line at:  
www.harrisonsgallery.co.nz

## FRAMING



Harrison's Gallery is a current member of the Fine Art Trade Guild and the New Zealand Institute of Picture Framers. Our Master Framers Stacey Howell is qualified under the FATG. We specialise in custom framing to conservation grade standards. We are renowned as the framers who think outside the square- often framing difficult or unusual items. There is nothing that we can't frame for you!



Hebe Glade, Ngaruahoe, by Mark Cross

## CONSERVATION TIPS EVERYONE SHOULD KNOW.

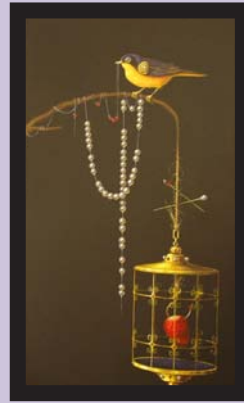
- **Make sure your framer is qualified.** Qualified framers have set rules to follow when framing your artwork, which sets a consistent bench-mark of standards. Our NZ recognised framing qualifications are GCF and CPF.
- **Don't store your artwork rolled up.** Rolling up your artwork for storage is the easiest way to store it but it's the worst thing you can do for it. Lay it flat and keep it in between archival tissue or archival board.
- **Use UV Filtered Glass.** When getting your artwork framed ask for 'Tru Vue' UV protection glass. New Zealand's level of UV light is highly aggressive and your artwork will fade without any UV protection.
- **Hang your artwork in the right place.** Don't hang your artwork in sunlight, above a fireplace, gas heater or in a bathroom (anywhere damp). Avoid extreme differences in temperature, moisture or heat.
- **Know what you're buying.** When buying artwork ask about the archival integrity of the work and products involved in its presentation. We often see expensive artwork on poor quality canvas, with cracking paint, & paper with obvious acid damage.



World War II Helmet and Goggles Framed by Harrison's Gallery

## Artwork for AUTUMN

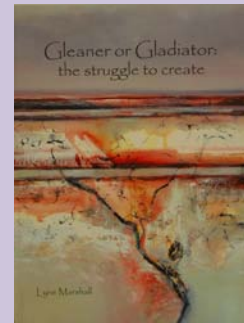
"Feathers & Pins" by Leila Ataya



Russian born Leila Ataya paints the most intricate detail imaginable. Her artworks are feminine & delicate. Leila

resides in Auckland - but is represented by Harrison's Gallery in the Bay of Plenty.

## BOOKS



"Gleaner or Gladiator", The struggle to create. By Lyne Marshall.

Lyne Marshall is a contemporary Australian artist. This book is the result of her ongoing research

towards a better understanding of the elements involved in producing emotive artworks. This book is highly recommended to professional & hobby artists as an interesting & creative point of view of the struggle to create. Available only at Harrison's.

# ART BUZZ

# CLASS SCHEDULE

Term 2, 2009

*kids classes*

## 'Creative Learning' for kids aged 5-8 years old \$170

Monday afternoons from 3.30pm to 5.00pm, 4th May - 22nd June (8 weeks)

Finela Moore will take the little kids on a eight week exploration covering basic painting, drawing and mixed media painting techniques. These techniques will include learning about contrast, colour, shading, texture and proportions.

Some artwork will be done onto stretched canvas. We guarantee your child will have fun learning 'everything arty' in a safe, creative environment! All art supplies are provided.

## 'Fine Art' for kids aged 9+ years old \$180

Wednesday afternoons from 3.45pm to 5.30pm, 6th May - 24th June (8 weeks)

Yay Finela's back! The kids are going to love the course we have planned for Term 2- with Finela Moore back due to popular demand she will take the kids on a creative journey exploring drawing, acrylic & mixed media painting fundamentals. All art supplies are provided.

## Adults Classes

'Mixed Media' with Finela Moore \$265  
DAY OR NIGHT CLASSES

Monday afternoons from 12.00pm to 2.00pm, 4th May - 22nd June (8 weeks) OR

Wednesday evenings from 7pm to 9pm, 6th May - 24th June (8 weeks)

For anyone out there who is not all ready completely familiar with the extraordinary mixed media artworks of Finela Moore you only need to google her name and you will enrol immediately- I promise!

Own art supplies included, list provided on enrolment.

'Life Drawing' with Graham Crow \$315

Tuesday evenings from 7.00pm to 9.00pm, 5th May - 23rd June (8 weeks)

Due to very popular demand Graham Crow will be teaching another term of life drawing. Graham is one of Tauranga's most renown local artist's. His artworks glorify the walls of homes and business throughout the Bay of Plenty and wider. So for eight weeks Graham will teach you the fundamentals and more of drawing the human form using live models. This course comes very highly recommended to beginners and artists wanting to advance their skill level.

All art supplies are provided.

'Expressionist Acrylics' with Talulah Belle \$265  
DAY OR NIGHT CLASSES

Thursday afternoons from 12.30pm to 2.30pm, 7th May - 25th June (8 weeks) OR

Thursday evenings from 7pm to 9pm, 7th May - 25th June (8 weeks)

Talulah's class will teach you practical, creative acrylic painting techniques which will aide you in the pursuit of your own highly expressive masterpiece. This is a great course for anyone wanting to gain new skills & techniques in painting or for experienced painters to loosen up their current acrylic painting methods! This is a very loose, free, fun, form of acrylic painting which focuses on landscape, portrait's and still life.

Own art supplies required- list provided on enrolment.

*Please note: we also offer individual tutoring for adults with Talulah Belle exploring Expressionist Acrylics- day or night.*

All courses are subject to a minimum number of enrolments. Maximum number of students per course is limited to 8

**ART SUPPLIES**  
**GOLDEN**  
ARTIST COLORS

## Be in to Win!!

visit Harrison's Gallery and enter the draw to win a gift basket of Golden products

Golden is coming to Harrison's soon!!

**HARRISON'S**  
**GALLERY**

[www.harrisonsgallery.co.nz](http://www.harrisonsgallery.co.nz)

Bay of Plenty's true fine art gallery  
106, Eleventh Avenue  
Tauranga

## Choosing The Right Easel continued

cont. from pg 1

...and paint, and they are small and light weight. However they are very limited because of their size to what size canvas you can put on them. These easels are recommended for the hobby artist who paints relatively small and prefers to pack up their easel once they have finished painting. There are many different designs/shapes available in table top easels and they generally retail from \$25 up.

- Acrylic & Oil Easels- The most common easels used are the H-Frame and the Lyre easels. Personally I prefer the H- Frame easel as I believe they are much sturdier and stay rigid even when you are working on very large canvases- H-frame easels should have a bottom canvas support and some sort of lockdown top clamp. The downside to H-frame easels is they tend to not be overall portable- generally will fold down flat but they are very long. The Lyre & Tripod easels have three legs and as mentioned not as rigid as the H-frame easels but generally they are cheaper, more portable and generally take up less room than the H-frame. Lyre easels are great as display easels.

- Watercolour Easels- It is common for watercolour easels to be highly portable, easy to fold up, light, and some fold up to a medium sized carry box and are relatively fast to set up again. The 'sketch box' easel also gives you storage space within the easel in the form of a draw or an area on the easel for your palette and materials. These types of easels are usually referred to as: Portable Tripod Easels, sketch box easels or "plein air" easels. The other type of watercolour easel available is an H-frame easel which is usually lower in overall height as one for oils or acrylics as they are designed for sitting at rather than standing. The canvas support board tilts horizontally so that when you apply water to the painting it doesn't run straight off the paper.



Table top Easel

There are many other specialist easels available, for example: A pastel artist easel that tilts forward so that the pastel dust falls to the floor, or a mixed media easel that can be tilted completely horizontally so when the artist is gluing, varnishing, etc everything doesn't fall off the canvas, then it is simply tilted vertically again for painting. It is suggested that when you purchase an easel that you have prepared a list of things you expect your easel to do- this way you will assist us in showing you the 'right' easel.

If you have any questions about specialist easels please feel free to contact Harrisons Gallery on (07) 578 9322



...cont from pg III

### ART BUZZ WORKSHOPS

#### Tim Wilson 'The Magic of Oils'

1. 'Tim Wilson, Oil landscape painting—Beginners' Suitable for novice students, Sunday 26th & Monday 27th April.
2. 'Tim Wilson, Oil landscape painting— Intermediate' Suitable for students with a basic understanding of oil painting concepts, Saturday 2nd & Sunday 3rd May.
3. 'Tim Wilson, Oil landscape painting—Advanced' Suitable for professional artists and very experienced hobby artists, Wednesday 29th & Thursday 30th April.

Please phone Harrisons Gallery for a information pack on the Tim Wilson workshops. These workshops are very specialized and are limited to 6 students per workshop.

#### 'Acrylics & Mixed Media' with James Lawrence (Auckland) \$330 2 DAY WORKSHOP

Saturday 20th & Sunday 21st June, 10am—4pm

James is a renowned New Zealand abstract artist, who also tutors at Whitecliff Art College in Auckland. His paintings are a rhythmic combination of feeling and thought. This can be seen by his application of intense, bright colours. He uses expressive brush work working in a layering fashion, to build depth and a 3D feel to his works. His works are beautifully balanced with a spontaneous feel to them. During this two day workshop James will show you how to begin and develop your ideas for paintings- through drawing, photography and other mixed media. He will then teach you how to utilize more advanced design and color techniques to enhance your painting skills. This course will be based around the use of acrylic paints and mediums and is suitable for beginners through to experienced artists.

Own art supplies required- list provided on enrolment.

#### 'Soul Portrait' with Julie Sutherland (Mixed Media Workshop) \$105 1 DAY WORKSHOP

Saturday 30th May, 9am—4pm

This workshop is an opportunity for self exploration through mixed media. Processes and techniques will be explained and explored and a completed art work, self portrait, suitable for hanging will be the outcome. Your completed narrative artwork will show your background and the people, symbols or objects which have special meaning in your life.

Own art supplies required- list provided on enrolment.